

GEOGRAPHY



CURRICULUM INTENT

'GEOGRAPHY IS A SUBJECT WHICH HOLDS THE KEY TO OUR FUTURE.'

(MICHAEL PALIN)

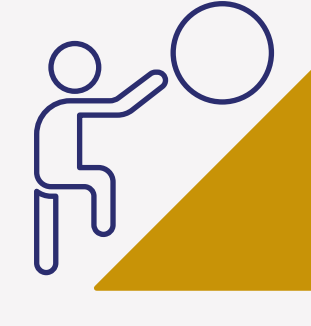
At Benton Park, the Geography curriculum aims to develop students who are knowledgeable, opinionated, articulate and evaluative.

Geographical study provides our students with locational knowledge and a sense of wonder about places. Geography enables students to learn about different cultures and societies from countries in all regions of the world, such as Africa, Asia, Russia and the Middle East, and how these may differ from their own. Our subject gives students place awareness about climatic regions, such as polar regions, hot deserts and rainforests, as well as demonstrating the vibrant dynamics of megacities. Geography at Benton Park gives students an understanding of global issues and inequalities, people and places across a wide and diverse spectrum. Students will explore a diverse range of places at different scales, such as the global, national and local levels, as well as recognising their own place in our complex and constantly changing world. In this way, they are becoming global citizens who will understand how different economies, societies and cultures have become increasingly interconnected.

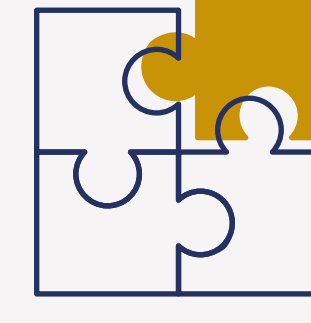
At Benton Park, we believe that Geography helps to provoke and provide answers to questions about the natural and human aspects of the globe. Our curriculum pushes students to think holistically and understand contemporary challenges that face the world. They will truly 'think like geographers', eventually becoming well-informed citizens of the planet.

BENTON PARK SCHOOL VALUES

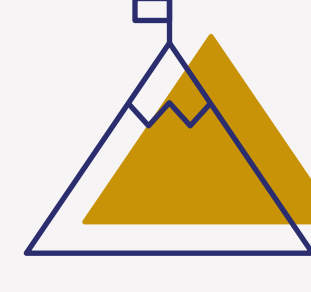
Geography students:



- Display ongoing **resilience** through case study investigations, fieldwork and the development of exam skills.



- **Collaborate** on global and regional issues through a wide range of case studies and field work opportunities.



- Sustainability is a key theme running through the entire Geography curriculum, students **endeavour** to find sustainable solutions for our school community and beyond.



- Develop **compassion** and empathy through the study of real-world issues, both human and physical.



- Are **inspired** each term through a range of career opportunities linked to Geography and the study of the world around us.

