

AQA CERTIFICATE LEVEL 3 MATHEMATICAL STUDIES



CURRICULUM INTENT

At Benton Park School the Mathematics department has 5 key aims that structure the delivery of our curriculum:

01 MATHEMATICALLY FLUENT

Students are numerate and capable of applying this numeracy confidently in contexts outside of the classroom.

02 ENJOYMENT

Students have a love of the beauty and logic of mathematics and appreciate maths in a wider context.

03 ANALYTICALLY CRITICAL

Students can analyse and question material presented to them, they are able to have the mathematics available to question the world around them and apply this to solve problems

04 FACILITATING

Students are equipped with the mathematics they need to apply to other disciplines in academia be this geography, psychology, science or business.

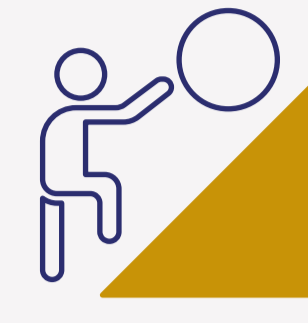
05 DISCIPLINARY MATHEMATICS

Students are able to develop a deep understanding of mathematics and are provided with the strongest disciplinary knowledge to access the highest secondary school maths and beyond.

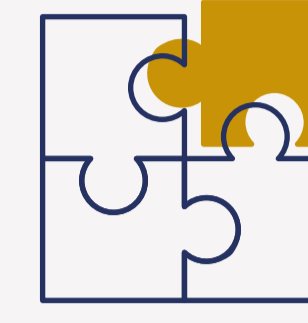
These aims help to create the climate for learning, opportunity and success within our curriculum.

BENTON PARK SCHOOL VALUES

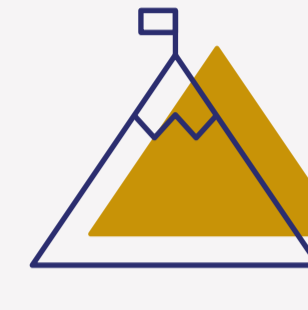
In Maths students develop:



- **Resilience** by problem solving and learning how to apply accurate formulas in context; by green penning assessment and work.



- **Collaboration** by working in pairs, groups and maths team games.



- **Endeavour** by finding a starting point to a problem and not being discouraged; by using goal free problems to find information.



- **Compassion** by listening to peers, learning from mistakes and understanding that failure is the first step to success.



- **Inspiration** by making links to careers and other areas of the curriculum; by realising that maths is everywhere; through celebrating other successes and ideas in the classroom.

